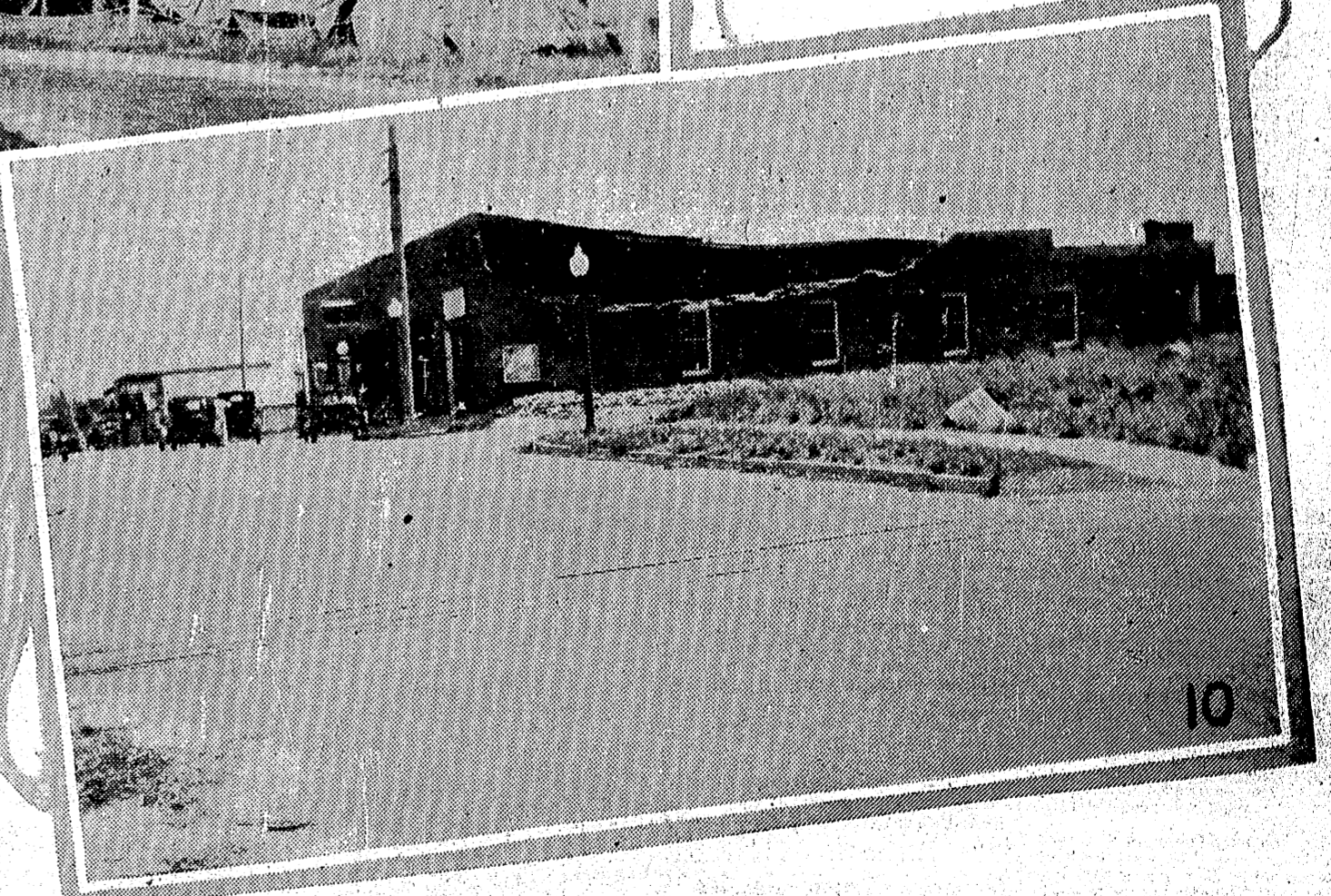
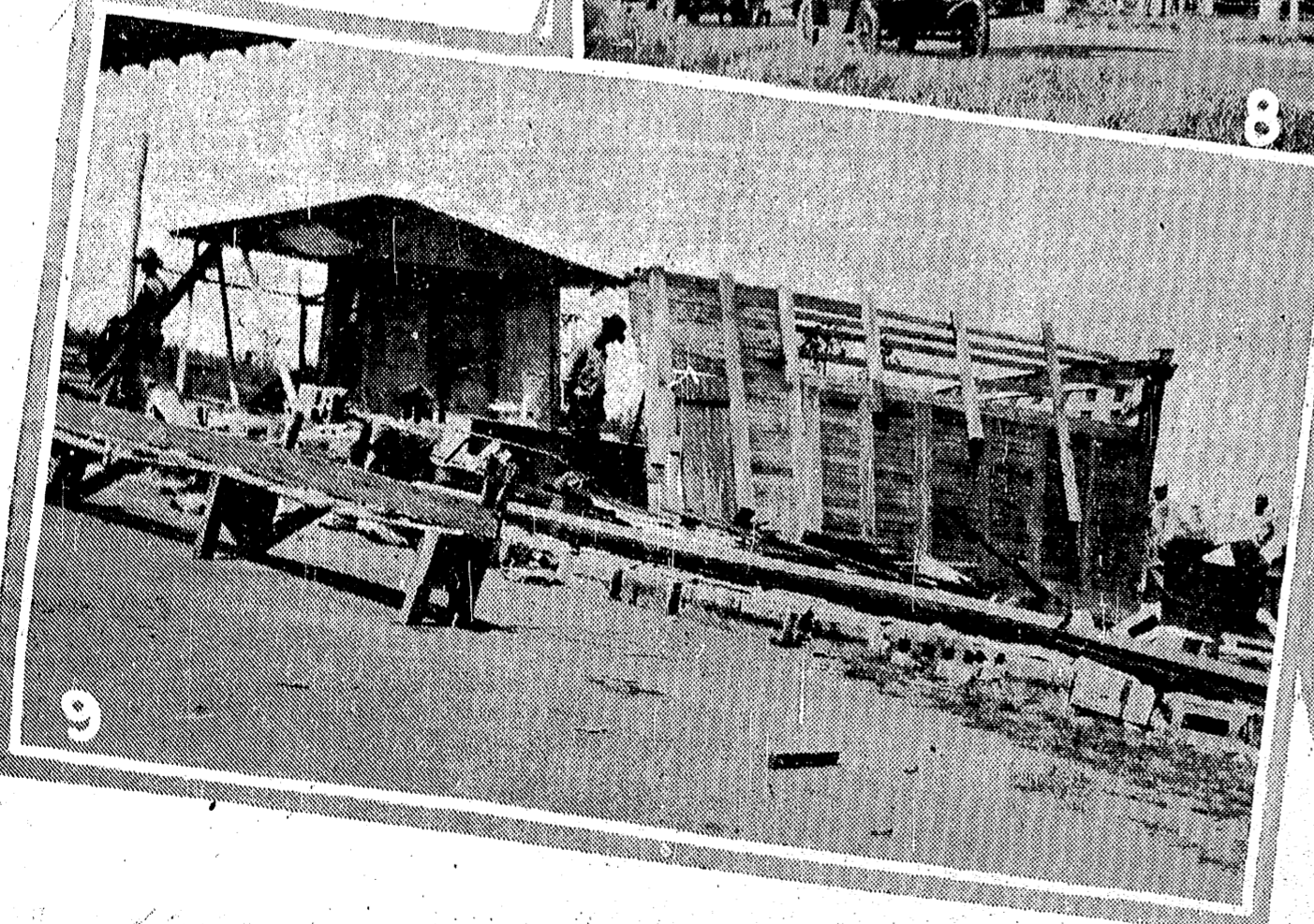
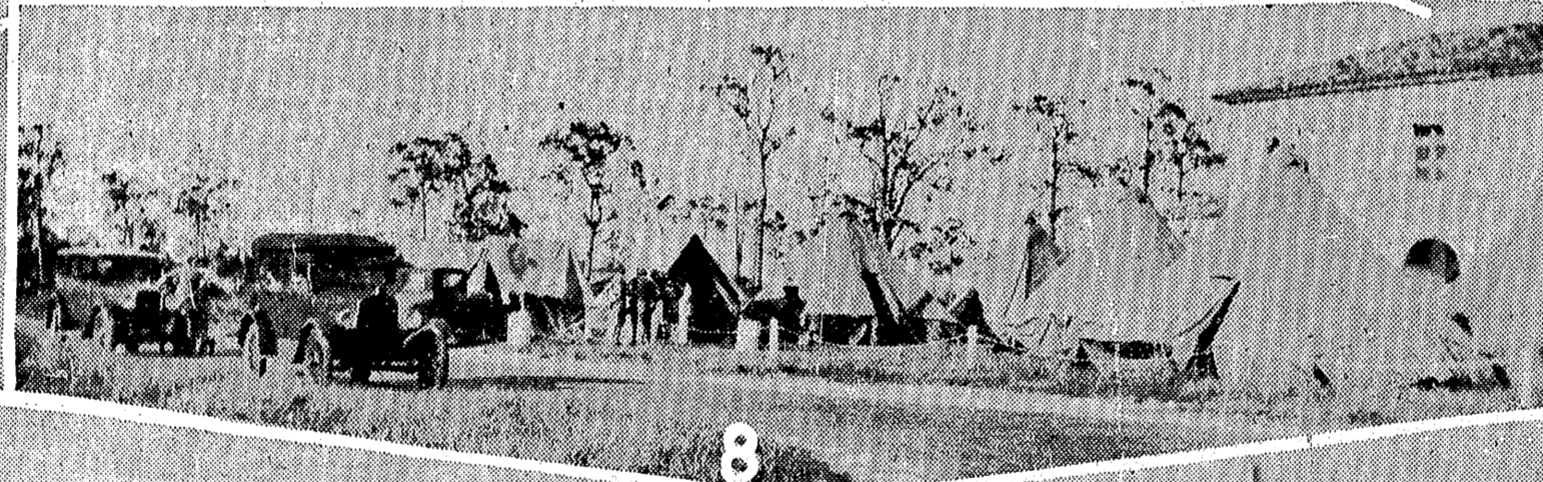
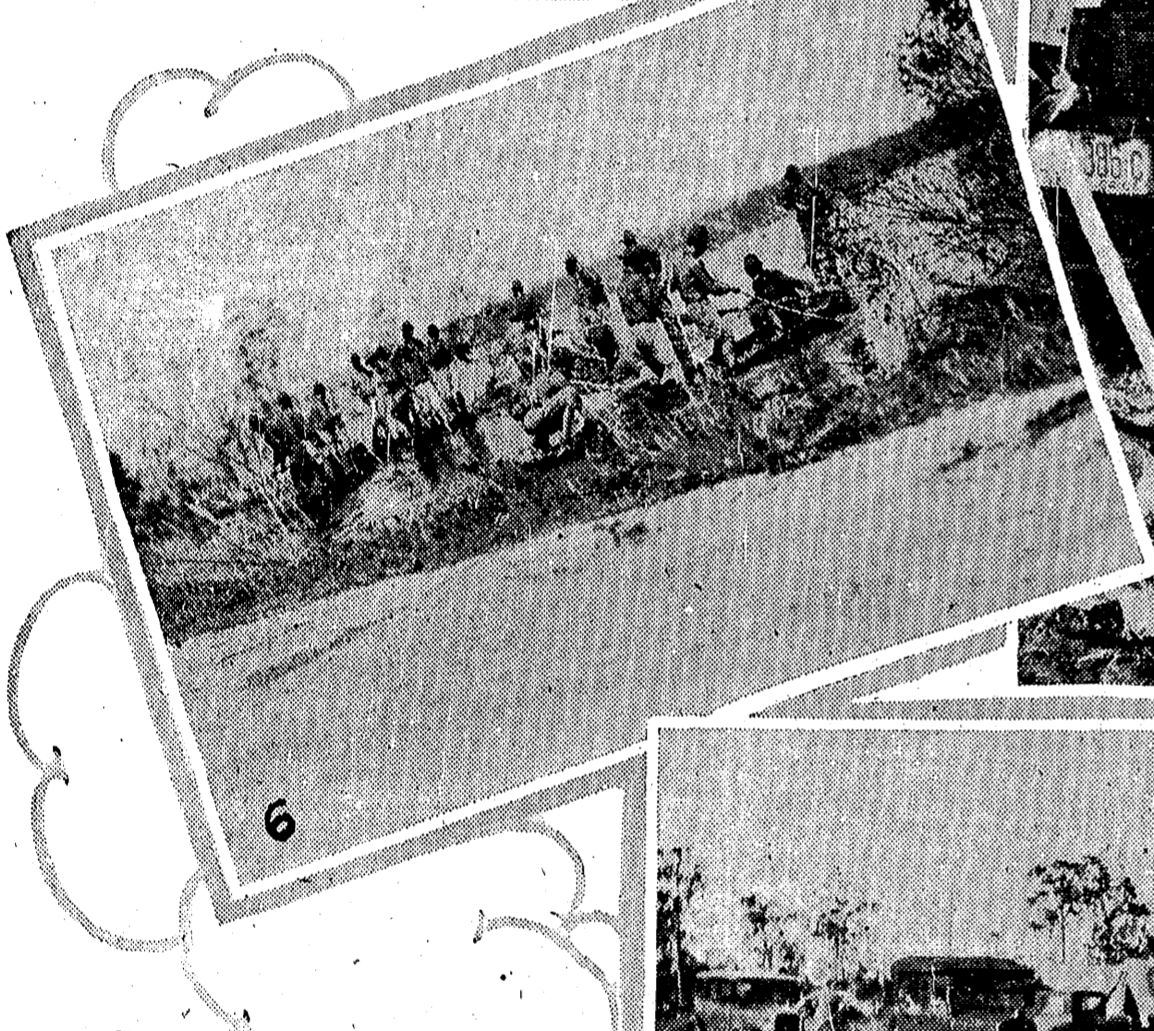
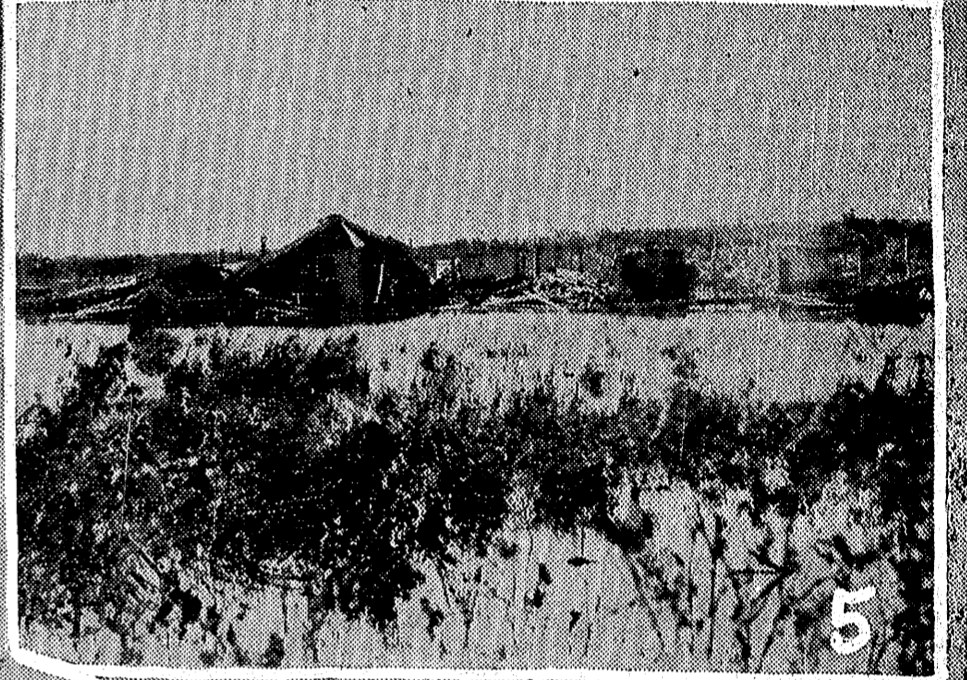
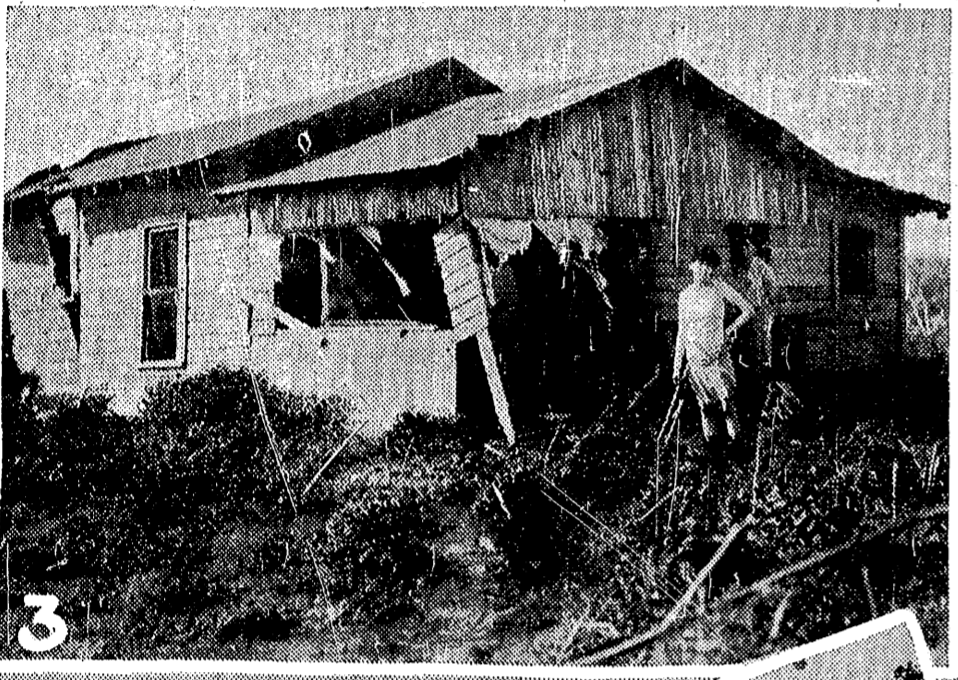


# Scenes of Property Damage and Relief Work In Wake of Storm



No. 1.—Filling station on the outskirts of Ft. Meade felt the last of the hurricane, falling beneath an avalanche of debris and tree trunks. No. 2.—The storm's pathway through Okeechobee City. Note roof of building at man's left and ruins of store at his right. No. 3.—Wrecked home and family across the bridge from toll gate on Conners Highway near Lake Okeechobee. This building was picked up by the storm and carried about half a mile inland. Some members of this family have not been found. No. 4.—Coupe caught beneath falling wall at Avon Park. No. 5.—Wreckage of home on shore of Lake Okeechobee adjacent to Okeechobee City in which a whole family is believed to have perished. No. 6.—Artillerymen using boats and rakes searching lake backwaters for dead. No. 7.—Unloading the first shipment of coffee to reach the Okeechobee lake district Monday evening. No. 8.—National guard camp in Okeechobee City where refugees are being fed. No. 9.—This mass of debris is all that remains of a grocery store in West Frostproof. No. 10.—The entire upper story and wall was cut from this Avon Park garage.